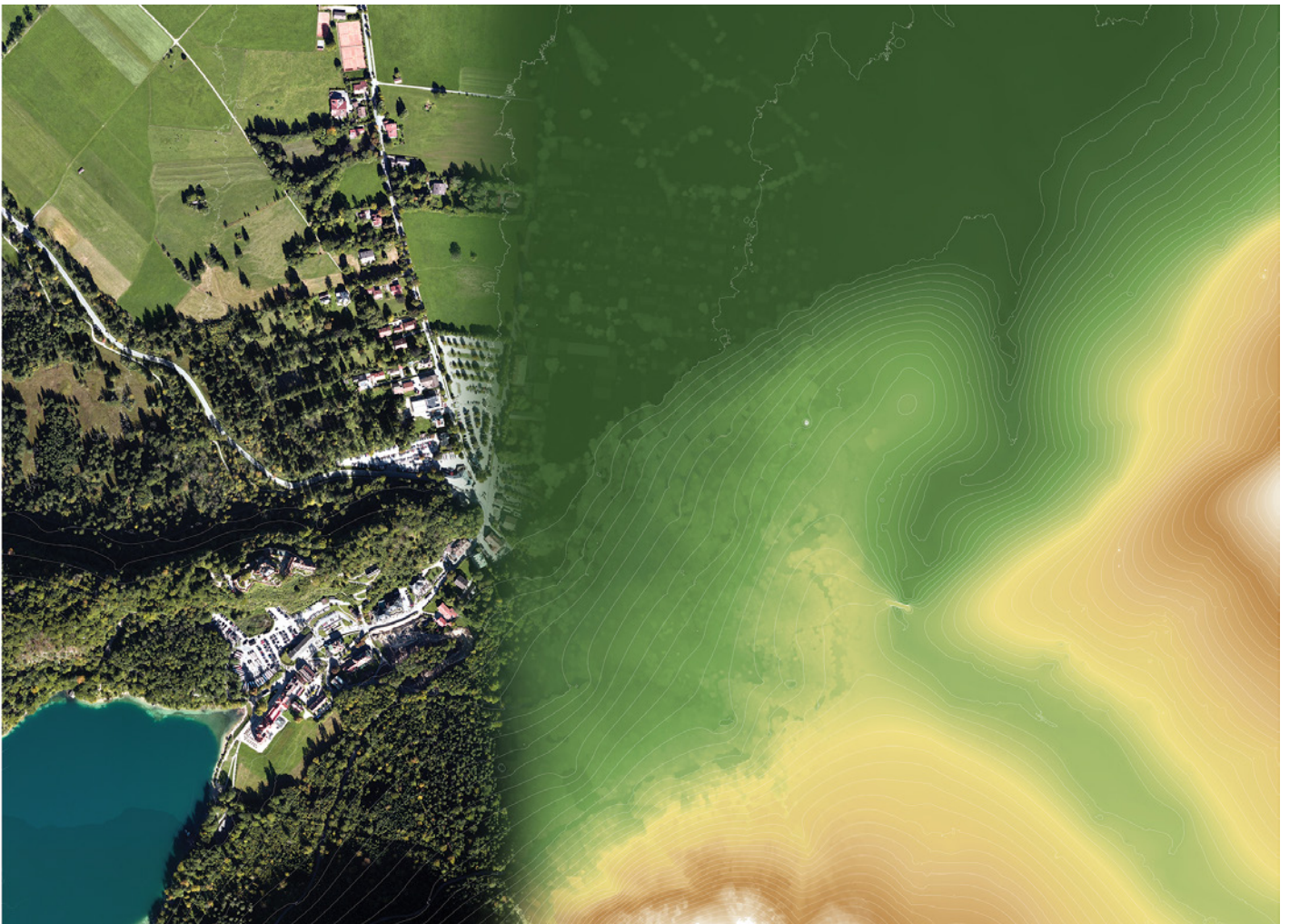


VEXCEL
IMAGING

ULTRAMAP V5.0

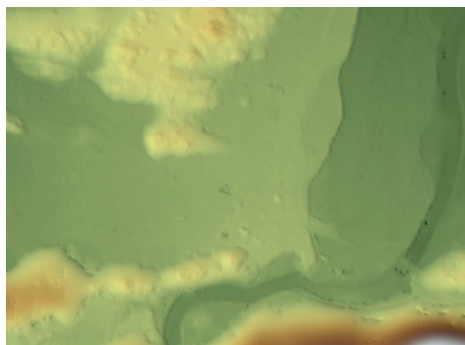
All-in-one aerial photogrammetry software



ULTRAMAP V 5.0 KEY FEATURES

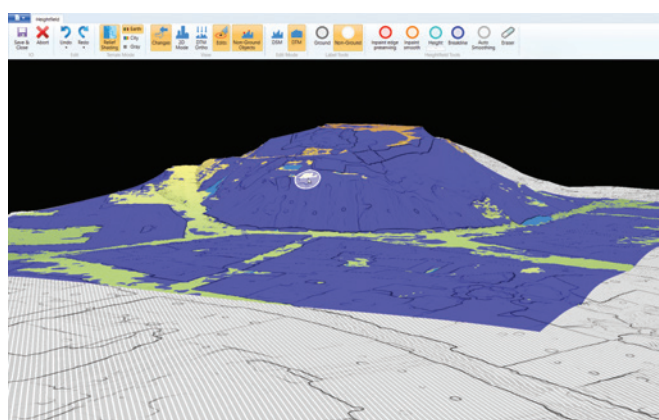
○ COMPREHENSIVE DTM GENERATION & EXPORT

Introduction of a completely new Digital Terrain Model (DTM) algorithm based on automatic semantic image segmentation and intelligent filtering.



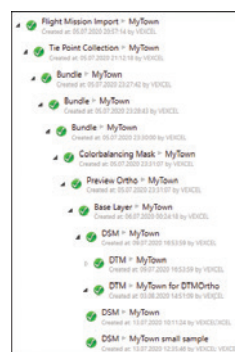
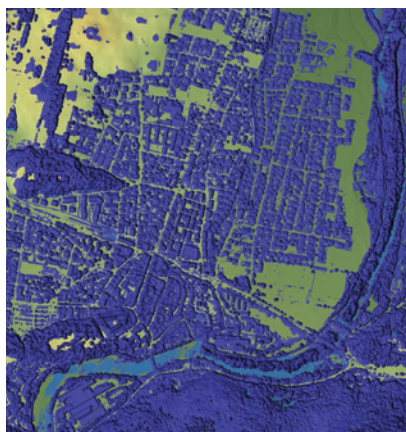
○ INTELLIGENT DTM EDITING

Simultaneous DSM & DTM editing in one interface.



○ INTUITIVE HEATMAP VISUALIZATION

Color-coded analysis of the heightfield at a glance to identify regions for manual editing faster.



○ FULL INTEGRATION OF ORTHO PRODUCTION IN ULTRAMAP STUDIO

One consistent and traceable workflow from flight mission import to ortho export.



ULTRAMAP V5.0

Elevate your performance.



YOERI SLAGBOOM
ULTRAMAP CUSTOMER

UltraMap is the all-in-one photogrammetric processing software for rapid generation of point clouds, DSMs, DTMs, ortho imagery and 3D textured TINS from UltraCam aerial imagery.

The combination of a highly automated and sophisticated workflow for streamlined processing, with the option of manual interaction when needed, makes UltraMap a flexible and powerful instrument for creating true photogrammetric quality products. Benefit from one software application for the entire photogrammetric workflow with numerous quality control tools as well as powerful visualization capabilities. Easily track, modify or repeat any of your data processing workflow steps. Projects of any

size and for any delivery schedule can be shipped using adjustable configurations of processing clusters before and during operation, and taking advantage of flexible subscription licensing options. Your investment today also pays off tomorrow: constantly updated feature sets are fully backward compatible to all UltraCam generations, ensuring that your data production always uses up-to-date algorithms and continues to improve through software updates.

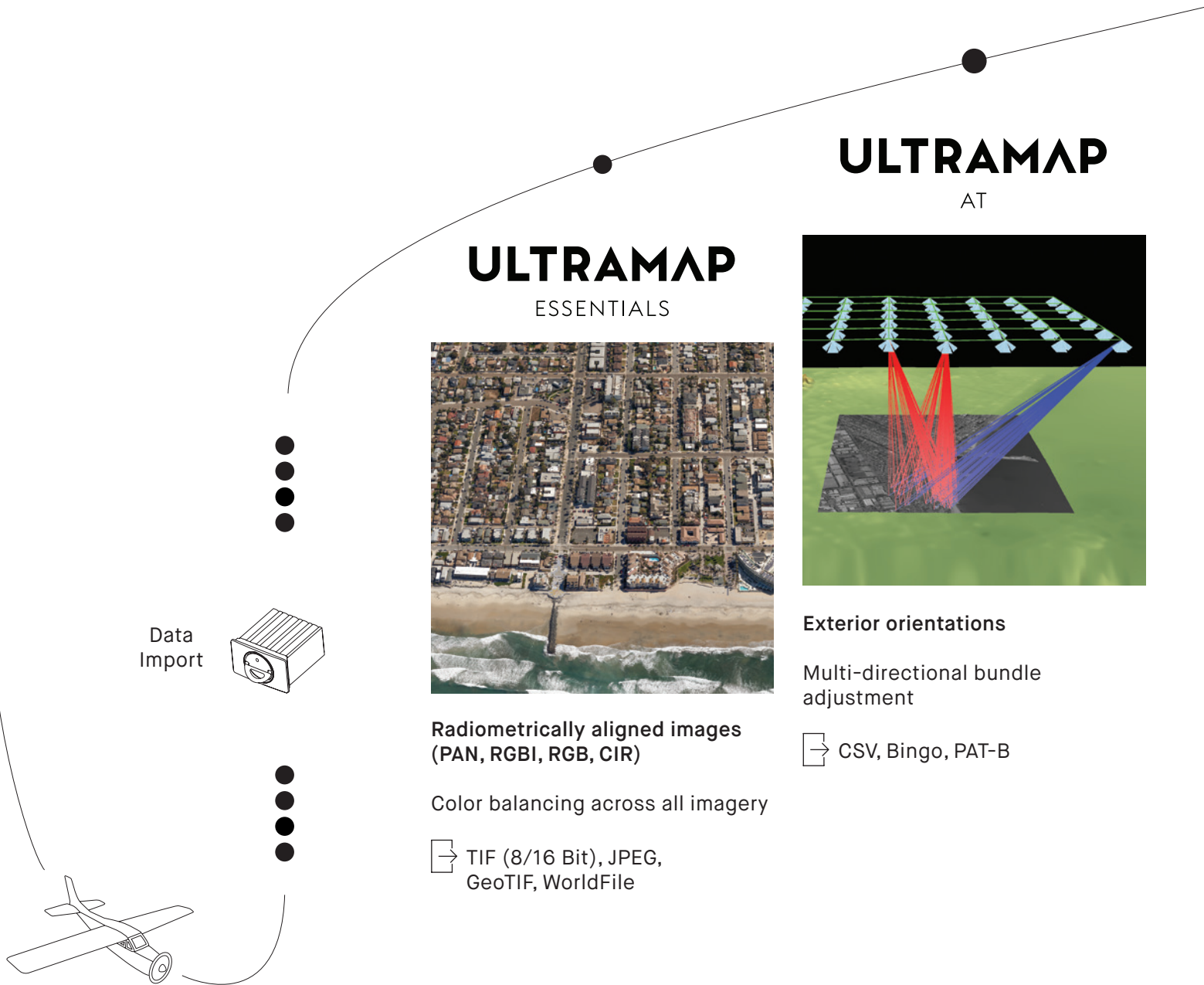
“The UltraMap software has enabled us to process larger imagery projects and much faster than ever before. In turn, this allows us to deliver the end results to clients soon after the flight. This is possible without the need for additional manpower thanks to the UltraMap distributed processing approach which permits us to take advantage of multiple computers.”



QUALITY DATA GENERATION

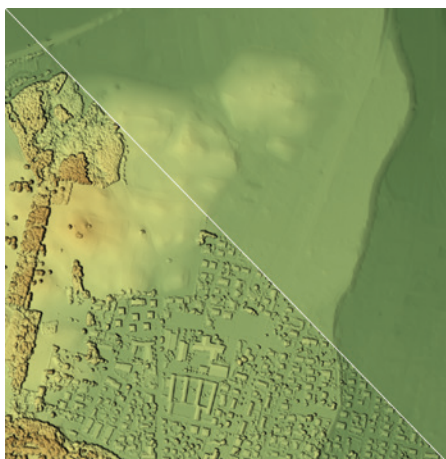
UltraMap Modules

The end-to-end UltraMap workflow consists of five consecutive modules for delivery of premium UltraCam imagery based point clouds, DSMs, ortho imagery and 3D textured TINs.



ULTRAMAP

DENSE MATCHER



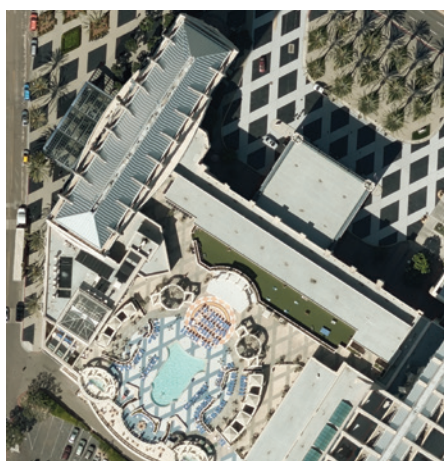
**DSMs, DTMs and
colored point clouds**

High-density elevation with
sharp edges and accurate
geometry

→ GeoTIF, LAS

ULTRAMAP

ORTHO PIPELINE



DSMOrthos and DTMOrthos

Sharp and noise free images
with fine detail throughout
the entire image

→ GeoTIF, WorldFile, Seamlines

ULTRAMAP

3D



**3D textured TIN, next
generation point clouds**

3D data generation plus
interactive view and export
module

→ LAS, OBJ, DAE, OSGB,
LODTreeExport

ULTRAMAP
SUBSCRIPTION
PLAN

Your perfect match

Cost-effective, just-in-time UltraMap processing: The UltraMap subscription plan offers licensing of UltraMap modules on a monthly basis. Use and pay for a specific UltraMap module or add processing power when you need it to get a job done.

Or choose the "lifetime subscription" that provides ownership of the software for an unlimited period of time.

BENEFIT FROM
OUR TECHNOLOGY

When you partner with Vexcel Imaging,
you get more than a camera.
You get cutting-edge technology
combined with a progressive service
concept for constant product
upgrades, world-class support
and one-stop solutions.
Today and tomorrow.



Vexcel Imaging GmbH • Anzengrurgasse 8 • 8010 Graz • Austria
www.vexcel-imaging.com

