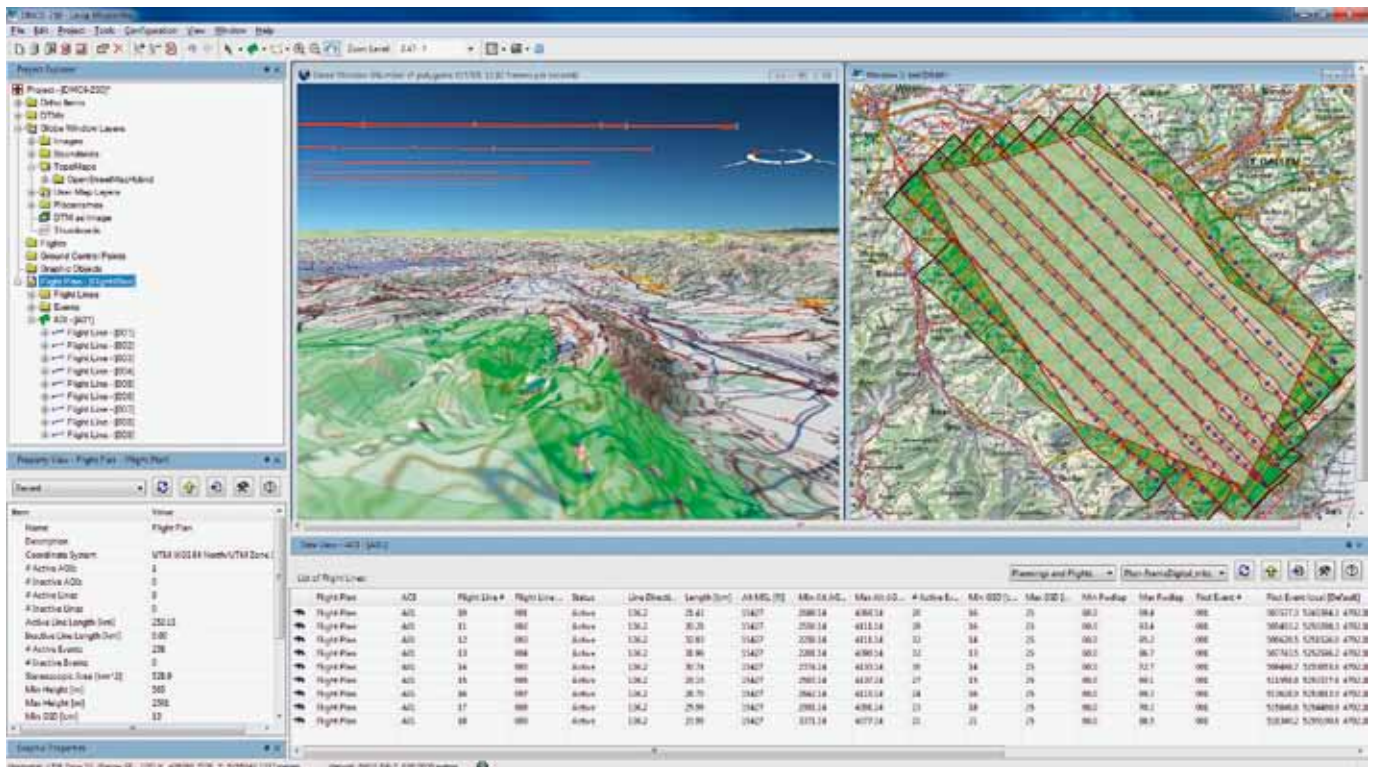


Leica MissionPro

Features

- Automatic and accurate computation of blocks, corridors and single flight lines from any user specified parameter such as area coverage, stereo overlap, point density and any other sensor-related parameters
- New 3D virtual globe planning environment and traditional 2D map planning view
- Sophisticated computation algorithms using local DTM and global SRTM/ASTER DTM data automatically
- Background maps from Web Map Service (WMS)-compliant map service providers
- Integrated multi-sensor planning and LiDAR planning
- Powerful reporting of all planned and flown information for planning, QC, cost estimation and project management
- Flight planning for all Leica Geosystems, Z/I Imaging and 3rd party airborne sensors
- Fully integrated into existing Z/I Imaging and Leica Geosystems workflows
- Export of flight plans for flight execution with Z/I Inflight, Leica FCMS, Leica ASCOT and other 3rd party flight management systems



Leica MissionPro Workspace

Illustrations, descriptions and technical data are not binding. All rights reserved. Printed in Switzerland – Copyright Leica Geosystems AG, Heerbrugg, Switzerland, 2012. 795765en – II.12 – Galedia

For further information please visit
<http://di.leica-geosystems.com>
 printed by aerial-survey-base

- when it has to be **right**

